



# KODA BY KODASEMA A

MOVABLE HOUSING SOLUTIONS

## KODA LOFT EXTENDED

EU MODEL

Comfort provided by a smaller footprint where nordic feel and finest design are built on a steel reinforced timber structure.

The compact yet spacious 45,8 sqm KODA Loft Extended includes an open-space living room, separate bedroom, two mezzanines for sleeping or storage areas, a shower room with toilet, a kitchen and a wooden terrace on both ends of the KODA. Year around living is enabled by the mineral wool insulation.

All the KODA needs is ground with leveled footing, sufficient weight-bearing capacity and connection points for water, electricity and sewage. Lifting and shifting are done by Kodasema, an authorized partner or local contractor. One day for installation – **pack the toothbrush and move in.**



## KODA LOFT EXTENDED IN NUMBERS

Gross buildable area 47.5sqm //  
50.8sqm with back terrace  
Usable floor area 45.8sqm  
Weight 13 tonnes

L12 127, W3930, H 4000 mm / L39.8, W 12.9, H13.1 ft  
L13 042 mm / L42.7 ft with back terrace

### U Values

U<sub>wall</sub>=0,27 W (m<sup>2</sup>K)  
U<sub>ceiling</sub>=0,173 ~ 0,17 W (m<sup>2</sup>K)  
U<sub>floor</sub>= 0,169~ 0,17 W (m<sup>2</sup>K)

**ARCHITECTS:** Ülar Mark, Maria Alnek, Liina-Liis Pihu  
**INTERIOR ARCHITECT:** Angela Orgusaar

### STRUCTURE

KODA walls, ceiling, floor and terrace  
Interior finish: plywood walls and ceiling,  
laminated floor  
Glass facade, 3 layered  
Front door  
Sunshade  
Technical room

### MEP (Mechanical, Electrical, Plumbing)

Electrical cables integrated in panels  
Electrical connection 20A 3Ph  
Electric floor heating  
LED lighting, readiness for pendant lights  
Sewage connection  
Water and plumbing connections  
Ventilation system  
Water boiler

### FURNISHINGS

Sleeping area (mezzanine) in front room and back  
Kitchen cabinets  
Built-in fridge  
Induction hob  
Curtain groove in sunshade  
Bathroom with sanitary equipment  
Mirror in bathroom

### EXTRAS

Natural engineered wood floor  
Kitchen hood  
Oven  
Dishwasher  
Nano-laminate work-top  
Premium mixers in bathroom and kitchen  
Back terrace with door  
Timber boards on walls and ceiling

### EXTERIOR EQUIPMENT

Mailbox (open)  
Bicycle holder

### EXTERIOR FINISH

Default - timber cladding, in various tones  
Extra - Steel cladding, in various tones  
Extra - Composite panels in various tones





# TELL US WHAT YOU NEED:

[sales@kodasema.com](mailto:sales@kodasema.com)



## A freestanding KODA for private use:

top quality architecture | movable | sustainable | stackable | zen | offsite prefab |

## A movable KODA Park for real-estate development:

hotel | office | café | studio | classroom | retail | co-working

## KODA for society or public services:

infill | built-to-rent | dynamic cities and planning | quick, easy & flexible

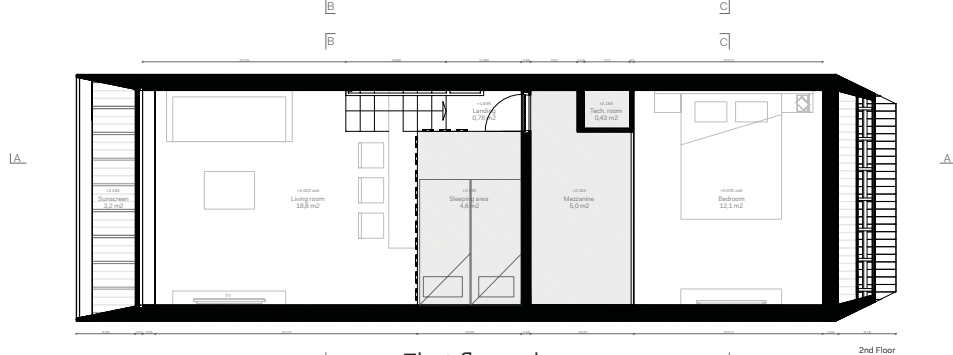
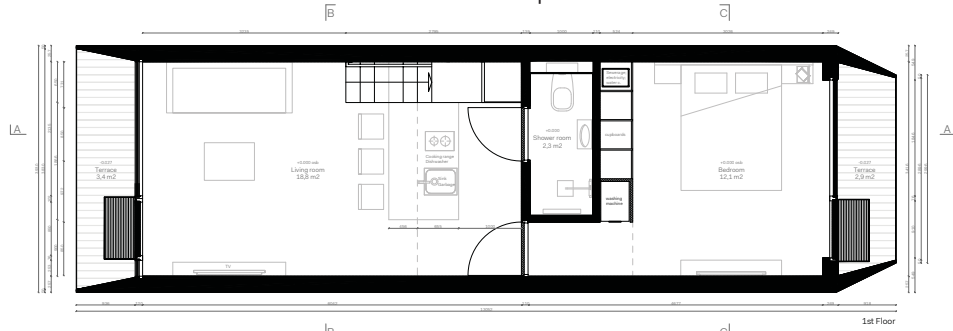


Find the most recent info on all KODA models and KODA Park solutions on our website and sign up for our newsletter for monthly updates!

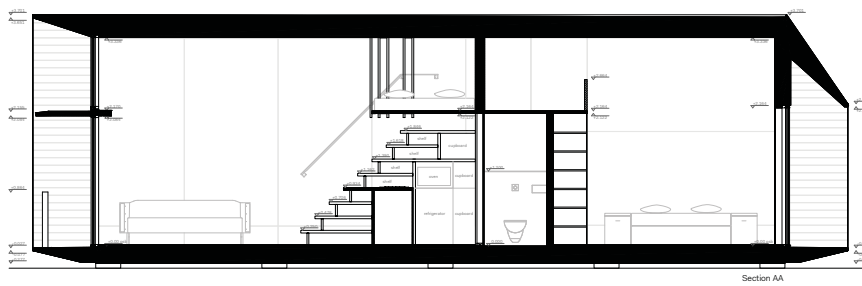
[kodasema.com](http://kodasema.com)



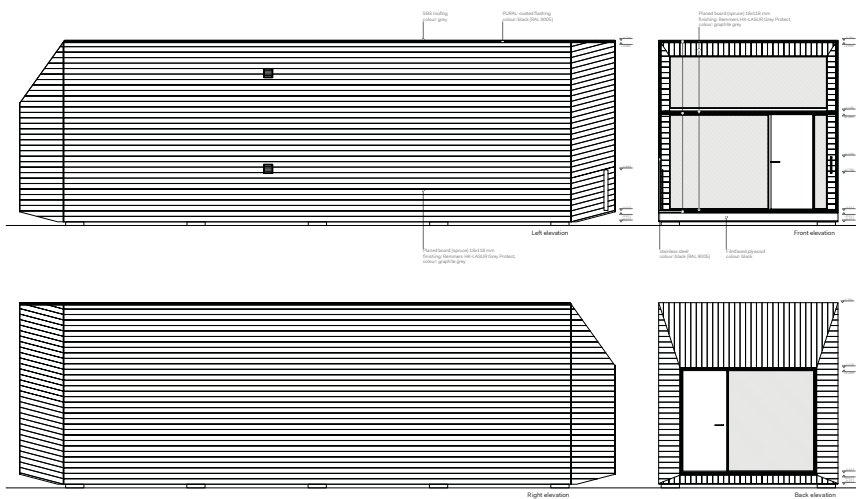
## Ground floor plan



## Indoors



## Sideviews



**KODA**  
BY KODASEMA  
MOVABLE HOUSING SOLUTIONS



WORLD Architecture Festival 2016:  
SMALL PROJECT PRIZE FINALIST 2017:  
SCHOOLS FINALIST



WAN Urban Challenge 2017:  
London Housing  
COMPETITION WINNER



American Architecture Prize 2016:  
SILVER MEDAL FOR INTERIOR 2017  
HOSPITALITY ARCHITECTURE &  
URBAN DESIGN WINNER



DNA Paris Design Awards Winner 2019  
KODA Park INTERIOR DESIGN / Sustainable living  
ARCHITECTURE / Green Architecture



OPAL winner 2019  
Property development

#kodabykodusema #modular #prefab #movable #turnkey #sustainableliving #compactliving #proptech