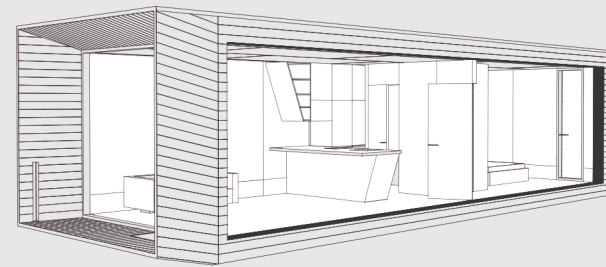


KODA BY KODASEMA

KODA
BY KODASEMA
A



COMPACT EXTENDED (EUROPEAN MODEL)

KODA COMPACT EXTENDED IN NUMBERS

GROSS BUILDABLE AREA 47.5SQM | 511 SF
 GROSS BUILDABLE AREA WITH BACK TERRACE 50.8SQM | 546 SF
 USABLE FLOOR AREA 35.4 SQM | 381 SF
 WEIGHT 12 TONNES

L12 107, W3930, H3361 MM | L39.7, W 12.9, H11 FT
 L13 042 MM | L42.7 FT WITH BACK TERRACE

U VALUES

THE U-VALUES OF KODA CONSTRUCTIONAL ELEMENTS RANGE BETWEEN 0,13 AND 0,18 W/M²K
 WHILE USING MINERAL WOOL INSULATION Λ 0,033.

INCLUDED IN STANDARD EQUIPMENT

*STANDARD INTERIOR FINISH IN MONOCHROME, OTHER COLOURS AVAILABLE UPON REQUEST

STRUCTURE AND FINISHES

TIMBER STRUCTURE
 INSULATED WALLS, CEILING, FLOOR
 INTERIOR FINISH: PLYWOOD WALLS AND CEILING,
 LAMINATE FLOOR
 GLASS FACADE, 3 LAYERED
 BEDROOM WINDOW WITH AN OPENABLE SECTION
 FRONT DOOR, ASSA ABLOY LOCK
 ROOF OVER TERRACE
 MAILBOX
 BICYCLE HOLDER
 TIMBER CLADDING

MEP (MECHANICAL, ELECTRICAL, PLUMBING)

ELECTRICAL CABLES INTEGRATED IN PANELS
 ELECTRICAL CONNECTION 20A 3PH
 ELECTRICAL FLOOR HEATING
 SWITCHES AND SOCKETS
 LED LIGHTING, READINESS FOR PENDANT LIGHTS
 SEWAGE CONNECTION
 WATER AND PLUMBING CONNECTIONS
 VENTILATION SYSTEM
 WATER BOILER
 TECHNICAL ROOM

FURNISHINGS

KITCHEN BASE CABINETS
 BUILT-IN FRIDGE
 INDUCTION HOB, 2-ZONES
 CURTAIN RAILS IN LIVING ROOM
 BATHROOM WITH SANITARY EQUIPMENT
 UNDER-SINK CABINET
 MIRROR IN BATHROOM



LIST OF EXTRAS

REAR TERRACE
 SIDE WINDOW MAX 3.5M
 SIDE WINDOW NARROW

 COMPOSITE PANEL CLADDING ALBOND/VIROC
 STEEL CLADDING

 NATURAL PARQUET FLOOR
 TIMBER CLADDED INTERIOR WALLS
 KITCHEN HOOD
 COMPACT OVEN
 INDUCTION HOB, 4-ZONES
 DISHWASHER
 NEROSTEIN (STONE) WORKTOP
 PREMIUM MIXERS IN BATHROOM AND KITCHEN
 PREMIUM TOILET
 SHOWER DOOR (GLASS)

 YALE DOORMAN SMART LOCK
 FENIX WIFI FLOOR HEATING CONTROLLER
 NILAN HVAC SYSTEM*
 UNICO AIR COOLING SYSTEM
 INSTANTANEOUS WATER HEATER STIEBEL ELTRON

 WARDROBE SHELVING
 FURNISHING, CURTAINS, LAMPS
 BATHROOM ACCESSORIES

KODA COMPACT EXTENDED



KODAS ARE DELIVERED ON A TRAILER FULLY TURN-KEY. THERE IS NO ASSEMBLY ON SITE. PLEASE KEEP IN MIND - KODA REQUIRES A GROUND WITH LEVELLED FOOTING, ACCESS WITH A CRANE, AND CONNECTION POINTS FOR WATER, SEWAGE, AND ELECTRICITY. FOR LIFTING AND CONNECTING TO THE UTILITIES YOU NEED TO HIRE A LOCAL CONTRACTOR. RELEVANT DRAWINGS ARE PROVIDED BY KODASEMA.

TAKE A LOOK AT THE KODA COMPACT EXTENDED WALKTHROUGH VIDEO HERE:



YOU CAN SUBSCRIBE TO KODA NEWSLETTER VIA KODASEMA.COM

