



# KODA<sup>BY KODASEMA</sup>A

MOVABLE HOUSING SOLUTIONS

## KODA Compact Luxury Sauna EU MODEL

KODA Compact Luxury Sauna is a comfy and cozy addition to your backyard, a luxurious rental apartment or a spa and massage salon in your hotel park. It's all up to your imagination.

KODA Compact Luxury Sauna comes with:  
lounge area, kitchenette, shower  
and steam room.

To maintain the ultimate sauna look and feel, we have chosen the finishes accordingly. The rustic white timber on the walls and black finish in the steam room are one of our customers' favourites.



ARCHITECTS: Maria Alnek, Maria Simmulmann



# KODA Compact Luxury Sauna IN NUMBERS

Gross Buildable area 28,4sqm

**Usable floor area 18,7sqm**

Weight ca 7tonnes

Roof snow load 400kg/sqm

External L = 7226 mm W = 3930 mm (+ 200 mm ladder)

H = 3364 mm (with ladder 3400mm)

Internal L = 5943 mm W = 3416 mm

H = 2700 mm V = 55 m<sup>3</sup>

Terrace

## STRUCTURE

KODA walls, floor, ceiling, terrace

Interior finish: roughly sawn timber cladding, laminate floor

Glass facade, 3 layered

Windows in steam room and shower

Front door - wooden

Roof over terrace

Technical room

## MEP (Mechanical, Electrical, Plumbing)

Electrical cables in panels

Electrical connection 20A 3Ph

Electric floor heating

LED lighting, readiness for pendant light

Sewerage connection 110mm

Water connection DN15

Ventilation system

Water boiler

Sauna heater

## FURNISHINGS

Kitchen cabinets

Built in fridge

Sauna benches

Bathroom and toilet with sanitary equipment

## PREMIUM EQUIPMENT - to be confirmed at extra cost

Natural parquet floor

Premium mixers in bathroom and kitchen

Premium toilet

Stove top

Kitchen hood

Wifi floor heating controllers

Wifi operated sauna heater

Cooling system

## EXTERIOR EQUIPMENT

Ladder installed on back wall

Bicycle holder

Mailbox

## EXTERIOR FINISH

Default timber cladding

Extra - steel cladding

Extra - composite panel



# TELL US WHAT YOU NEED:

[sales@kodasema.com](mailto:sales@kodasema.com)



## A freestanding KODA for private use:

top quality architecture | movable | sustainable |  
stackable | zen | offsite

## A movable KODA Park for real-estate development:

hotel | office | café | studio | classroom | retail |  
co-working

## KODA for society or public services:

infill | built-to-rent | dynamic cities and planning |  
quick, easy & flexible



Find the most recent info on all KODA models and  
KODA Park solutions on our website and sign up for  
our newsletter for monthly updates!

[kodasema.com](http://kodasema.com)

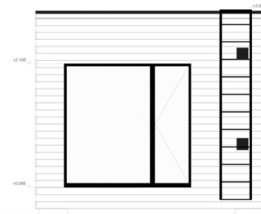




Floor plan



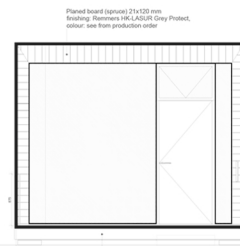
Right elevation



Back elevation



Left elevation



Front elevation

# KODA

BY KODASEMA

MOVABLE HOUSING SOLUTIONS



WORLD Architecture Festival 2016:  
SMALL PROJECT PRIZE FINALIST 2017:  
SCHOOLS FINALIST



WAN Urban Challenge 2017:  
London Housing  
COMPETITION WINNER



American Architecture Prize 2016:  
SILVER MEDAL FOR INTERIOR 2017  
HOSPITALITY ARCHITECTURE &  
URBAN DESIGN WINNER



DNA Paris Design Awards Winner 2019  
KODA Park INTERIOR DESIGN / Sustainable living  
ARCHITECTURE / Green Architecture



OPAL winner 2019  
Property development

#kodabykodasema #modular #prefab #movable #turnkey #sustainableliving #compactliving #proptech