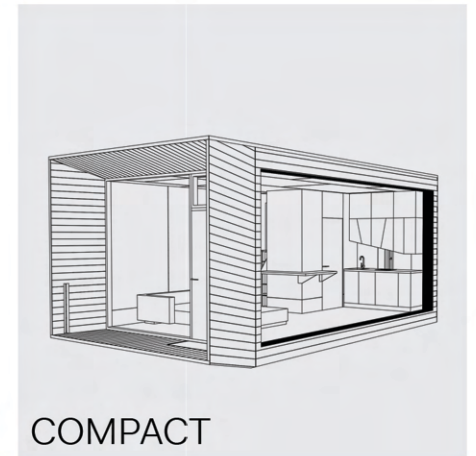
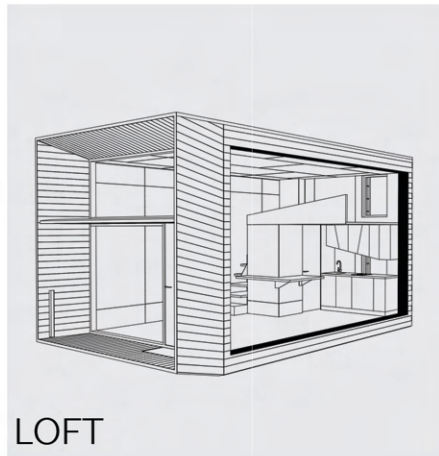


KODA BY KODASEMA

KODA
BY KODASEMA



INCLUDED IN STANDARD EQUIPMENT

*STANDARD INTERIOR FINISH IN MONOCHROME

STRUCTURE AND FINISHES

TIMBER STRUCTURE
 INSULATED WALLS, CEILING, FLOOR
 INTERIOR FINISH: PLYWOOD WALLS AND CEILING,
 LAMINATE FLOOR
 GLASS FACADE, 3 LAYERED
 TWO OPENABLE WINDOWS
 LOFT AREA
 FRONT DOOR, ASSA ABLOY LOCK
 SUNSHADE AND TERRACE
 MAILBOX
 BICYCLE HOLDER
 TIMBER CLADDING

MEP (MECHANICAL, ELECTRICAL, PLUMBING)

ELECTRICAL CABLES INTEGRATED IN PANELS
 ELECTRICAL CONNECTION 20A 3PH
 ELECTRICAL FLOOR HEATING
 SWITCHES AND SOCKETS
 LED LIGHTING, READINESS FOR PENDANT LIGHTS
 WATER AND PLUMBING CONNECTIONS
 VENTILATION SYSTEM
 WATER BOILER
 TECHNICAL ROOM

FURNISHINGS

KITCHEN CABINETS
 BUILT-IN FRIDGE
 INDUCTION HOB, 2-ZONES
 CURTAIN RAILS IN LIVING ROOM
 BATHROOM WITH SANITARY EQUIPMENT
 MIRROR IN LIVINGROOM
 MIRROR IN BATHROOM



LIST OF EXTRAS

SIDE WINDOW MAX 3M
 SIDE WINDOW NARROW

COMPOSITE PANEL CLADDING ALBOND/VIROC
 STEEL CLADDING

NATURAL PARQUET FLOOR
 KITCHEN CABINETS ON SIDE WALL
 KITCHEN HOOD
 INTEGRATED DINING TABLE
 INDUCTION HOB, 4-ZONES
 DISHWASHER
 NEROSTEIN (STONE) WORKTOP
 PREMIUM MIXERS IN BATHROOM AND KITCHEN
 PREMIUM TOILET
 SHOWER DOOR (GLASS)

YALE DOORMAN SMART LOCK
 FENIX WIFI FLOOR HEATING CONTROLLER
 NILAN HVAC SYSTEM
 UNICO AIR COOLING SYSTEM
 INSTANTANEOUS WATER HEATER STIEBEL ELTRON

FURNISHING, CURTAINS, LAMPS
 BATHROOM ACCESSORIES

KODA LOFT IN NUMBERS

GROSS BUILDABLE AREA 28.8 SQM | 310 SF
USABLE FLOOR AREA 26.7 SQM | 287.3 SF
WEIGHT CA 9.5 TONNES

EXTERNAL L 7226, W 3930, H 4000 MM | L 23.7, W 12.9, H 13.1 FT
INTERNAL L 5919, W 3413, H 3263 MM | 19.4, 11.1, 10.7 FT

KODA COMPACT IN NUMBERS

GROSS BUILDABLE AREA 28.8 SQM | 310 SF
USABLE FLOOR AREA 20.5 SQM | 220.6 SF
WEIGHT CA 9 TONNES

EXTERNAL L 7226, W 3930, H 3164 (L WITH LADDER + 200) MM | L 23.7, W 12.9, H 10.3 FT
INTERNAL L 5919, W 3413, H 2700MM | 19.4, 11.1, 8.8 FT

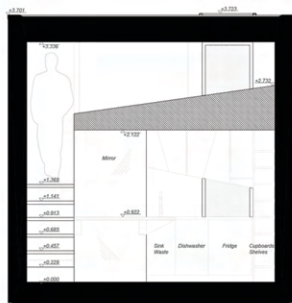
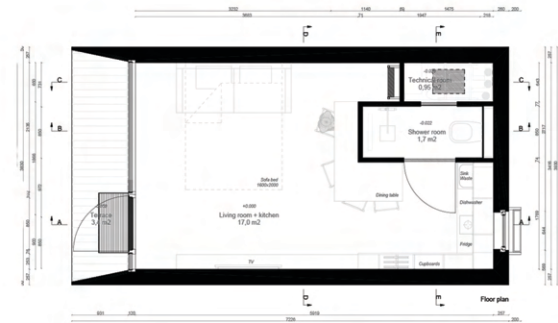
U VALUES

THE U-VALUES OF KODA CONSTRUCTIONAL ELEMENTS RANGE BETWEEN 0,13 AND 0,18 W/M²K
WHILE USING MINERAL WOOL INSULATION Λ 0,033.

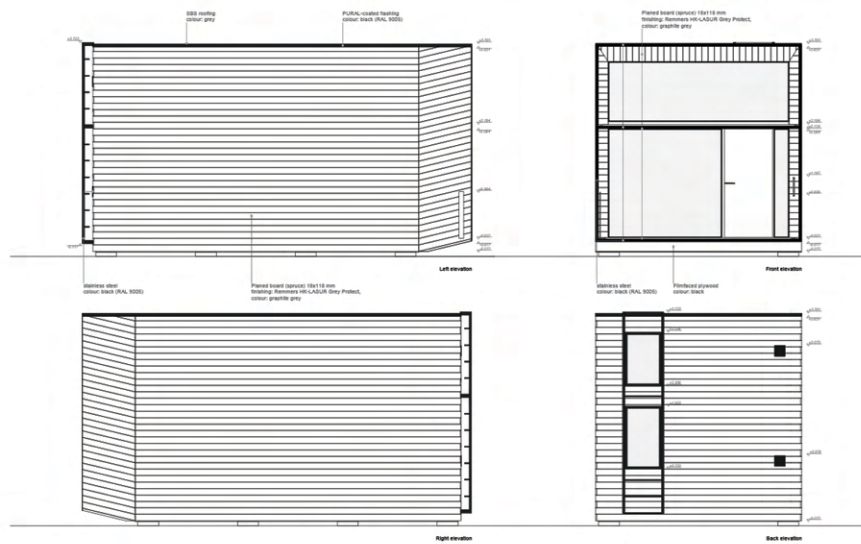


KODA LOFT

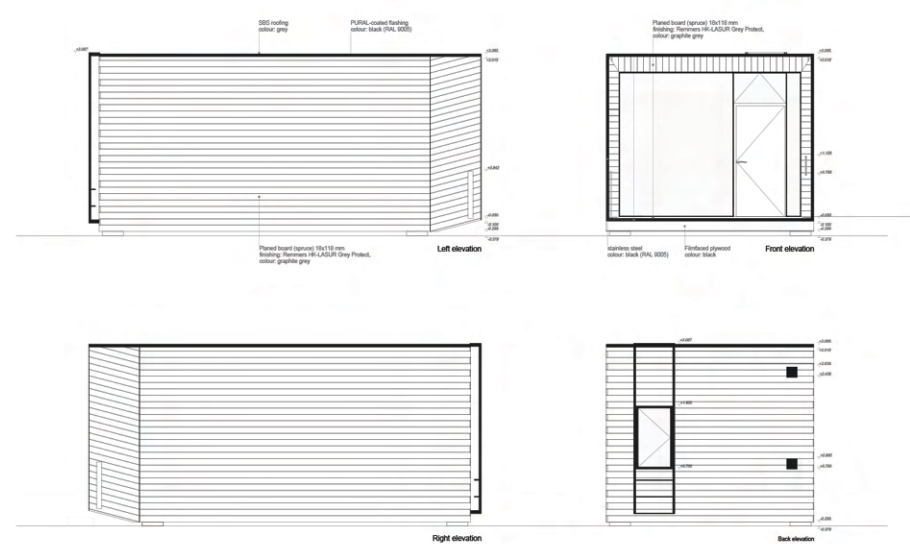
KODA COMPACT



KODA LOFT



KODA COMPACT



KODAS ARE DELIVERED ON A TRAILER FULLY TURN-KEY. THERE IS NO ASSEMBLY ON SITE. PLEASE KEEP IN MIND - KODA REQUIRES A GROUND WITH LEVELLED FOOTING, ACCESS WITH A CRANE, AND CONNECTION POINTS FOR WATER, SEWAGE, AND ELECTRICITY. FOR LIFTING AND CONNECTING TO THE UTILITIES YOU NEED TO HIRE A LOCAL CONTRACTOR. RELEVANT DRAWINGS ARE PROVIDED BY KODASEMA.

TAKE A LOOK AT THE KODA LOFT WALKTHROUGH VIDEO HERE:



YOU CAN SUBSCRIBE TO KODA NEWSLETTER VIA KODASEMA.COM

