

KODA Compact Extended Hotel 3-in-1

Fact sheet | 29.03.2021



top quality architecture | construction offsite | movable | sustainable | stackable | zen | 3in1

Hotel and hospitality industry have gone through quite a change over the last years due to booking platforms, sharing economy and now the pandemic. The rise of movements such as minimalism, tiny house living and the digi-nomadic lifestyle indicates **housing-as-a-service** is the trend towards 2030. KODA Park responds to some of the changes in demand on the market extremely well - it is high-quality and its design, due to the size, feels personal, unique.

KODA Compact Extended 3in1 has different room types for rent: large room, smaller room, family room.

Why opt for an off-site constructed turn-key KODA hotel:

1. **Faster on-location and 15-20% less expensive**
 - a. You do all your pre-planning and site design
 - b. Once your KODAs arrive, you remove the wrapping, have them lifted into the right place, connect the mains, and your hotel or community is pretty much ready
2. **Great for existing hotel extensions** - no need to shut down the whole hotel for renovations for adding rooms. You can add or transform rooms with much less hassle.
3. **Sustainable** approach - no months-long noise pollution with machinery and building materials transported in and out of site daily.
4. KODA design is **flexible**: you can place your freestanding hotel rooms around the city, or as a community.
5. The design of KODA hotels has been **stress-tested** and [awarded](#) since 2016.

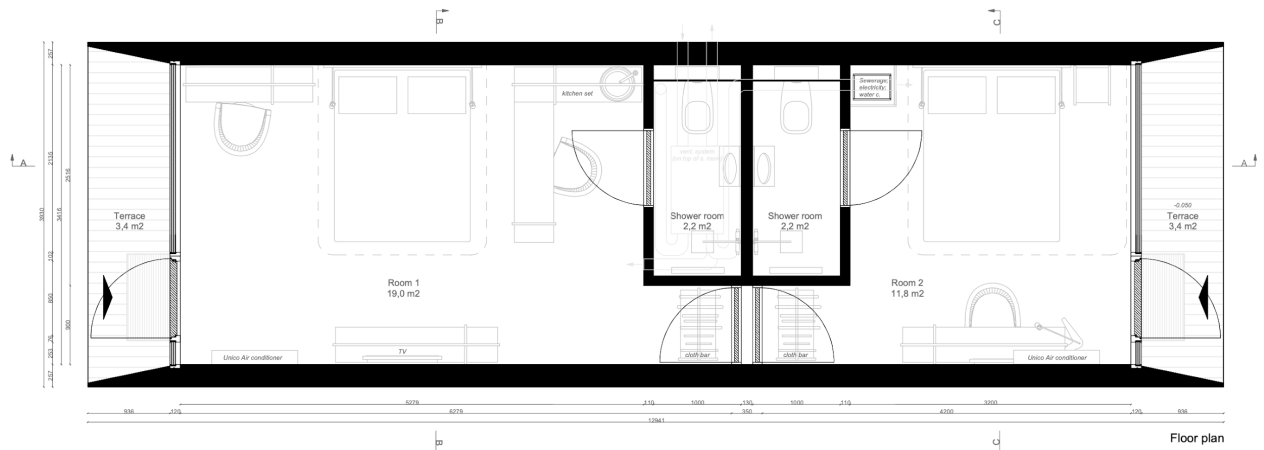
Why do customers opt for a KODA hotel:

1. Customers get to stay not in an 'accommodation factory', but rather enjoy a **small villa all by themselves**
2. **Private, safe and healthy** - customers get their own entrance directly to the room, with no need to share an elevator or stand in line at the check-in.



#tokushoes

BY KODASEMA



KODA Compact Extended Hotel 3in1 in numbers:

Area of building perimeter: 50.9 m²
 Usable floor area: 35.2 m²
 Weight: ca 12 t
 Roof snow load: 400kg/m²

External: L = 12941 W = 3930 mm H = 3364 mm
 Internal: L = 10829 mm (window to window) W = 3416 mm H = 2700 mm
 V = 99.9 m³

U-values
 U_{wall}=0,16 W (m²K) | U_{ceiling}=0,16 W (m²K) | U_{floor}= 0,13 W (m²K)



>>>Or: choose any other [KODA model](#) for your next hotel development!

Contact us for prices: sales@kodasema.com

