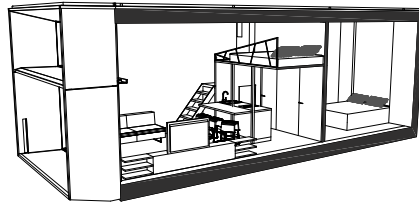


KODA

BY KODASEMA



KODA Light Extended by Kodasema
standard equipment

instant. multifunctional. movable. zen.



“ One of the most innovative homes of 2016 ”
Business Insider

Models

House name	KODA Light Extended standard equipment
Project status	Available for purchase
KODA Light Extended for Living	KODA home includes an open-space living room with a full size sleeping area on the mezzanine, a bedroom, a shower room with toilet, a kitchen and a wooden terrace.
KODA Light Extended Stay	Why not use a KODA as a hotel suite with a separate bedroom and an upper-level sleeping area for two persons, a shower room with toilet, a kitchenette and a wooden terrace. See a functioning system of KODA houses here: http://www.kodastay.com/
KODA Light Extended for Working	Fully equipped KODA house can be used as a working space, retail or cafe.



This 3D rendering is illustrative. For full list of equipment, please see the price list.

KODA is a perfect urban infill unit.

Combined together KODA houses create a vibrant mixture of homes and hotels, offices, cafés, co-working spaces, service spots and shops, and a community area in a snap.



Technical

DIMENSIONS

External	L 11082, W 3930, H 3985 mm / L 36.4, W 12.9, H 13.1 ft
Internal	L 6039+3580, W 3392, H 3263 mm / L 19.8+11.7, W 11.1, H 10.7 ft
Terrace	L 1062, W 3730 mm / L 3.5, W 12.2 ft

AREA OF ROOMS

Living room+kitchen	18.6 m ² / 200.2 ft ²
Shower room	2.1 m ² / 22.6 ft ²
Area upstairs	7.6 m ² / 81.8 ft ²
Technical room	0.8 m ² / 8.6 ft ²
Bedroom	9.7 m ² / 104.4 ft ²
TOTAL	38.8 m ² / 417.6 ft ²
Terrace	3.8 m ² / 40.9 ft ²

Internal volume	106.46 m ³ / 3760 ft ³
Weight	ca. 19 tons
Construction materials	Wood, glass, steel

Transportation and installation KODA Light Extended is transportable via trailer in one piece and just needs a crane to fit it to the place. Installation and connecting to communications takes less than a day. No need for laying foundation, it is integrated, ground with levelled footing and sufficient weight-bearing capacity is enough. Although KODA Light Extended needs support under walls.

Heating KODA Light Extended has electric floor heating in living room, shower room and kitchen. For water heating there is an electric boiler. Features like light interior colors and sunscreen on the glass facade work against overheating.

Equipment KODA Light comes with built-in electrical and sewage system ready for connection, PAX EOS 100H ventilation system which exchanges the air and maintains the heat, water heater, ready to use bathroom and toilet, built-in LED lighting indoors and on the facade, with natural finishes on surfaces, etc.

Heat insulation The initial offer includes 200mm mineral wool layer of insulation in walls and 250mm in ceiling and floor. The U-value for walls is 0.211 W/m²K, for ceiling U-value is 0.145 W/m²K and for floor U-value is 0.144 W/m²K. The U-value of KODA Light 's three-ply glass facade is 0.73 W/m²K.

Energy supply Electrical grid

Required connections Water, electrical grid, sewerage



World Architecture Festival 2016:
SMALL PROJECT PRIZE FINALIST
2017:
SCHOOLS FINALIST



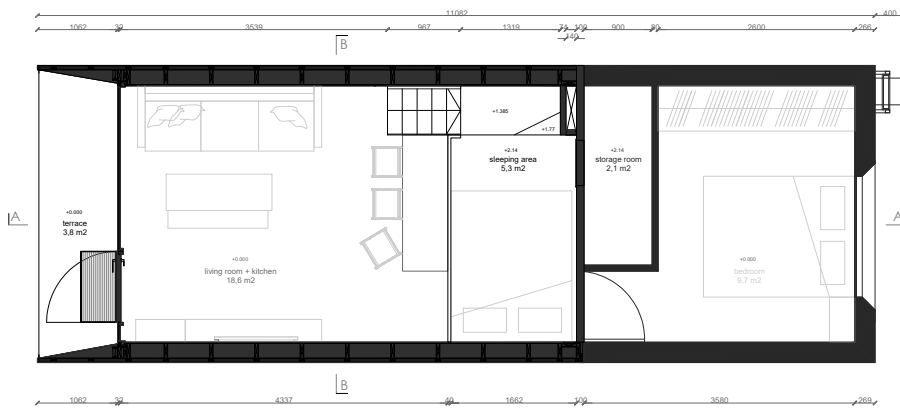
WAN Urban Challenge 2017:
London Housing
COMPETITION WINNER



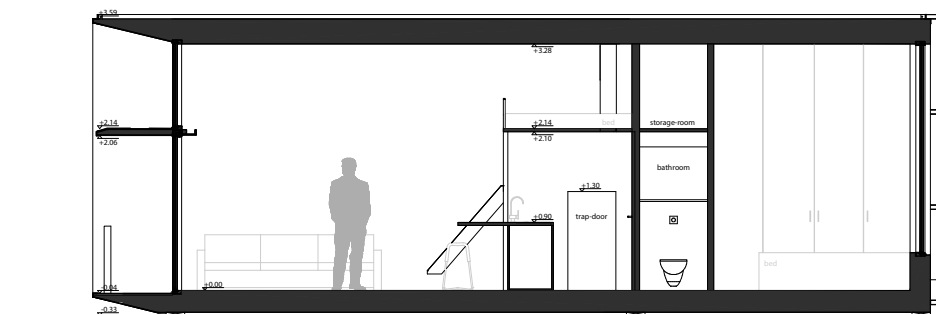
American Architecture Prize 2016:
SILVER MEDAL FOR INTERIOR
2017:
HOSPITALITY ARCHITECTURE &
URBAN DESIGN WINNER



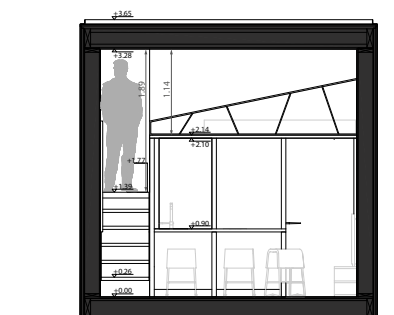
Ground floor plan M 1:100 / A4



First floor plan (h=2,6m) M 1:100 / A4



Section B-B M 1:100 / A4



Section C-C M 1:100 / A4